

BNSF Railway Network Velocity & Service

STB Status Update: August 8, 2014



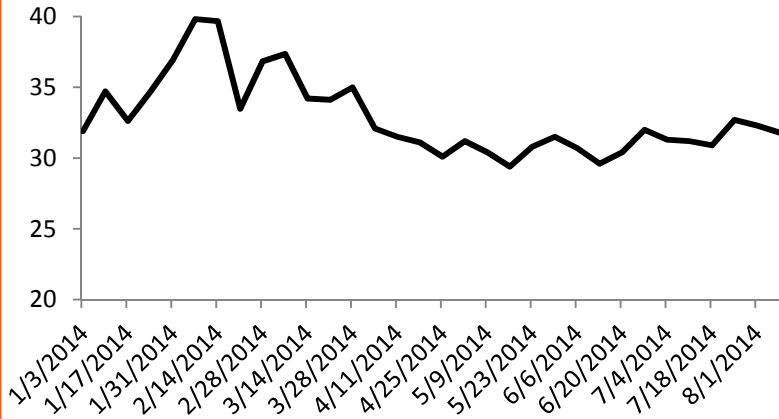
BNSF Dashboard Service Metrics

	Goal Q3 2014	Baseline 2/1-2/7	Actuals QTD 8/8	Change from Baseline
Coal Avg Monthly Tons (in millions)	24.9	19.2	21.7	↑ 13.0%
IM System Transit Days	4.00	5.32	4.76	↓ 10.5%
AAR Terminal Dwell Hours	27.6	34.6	29.4	↓ 15.0%
AAR Train Speed	N/A	21.8	21.1	↓ 3.2%



North Region

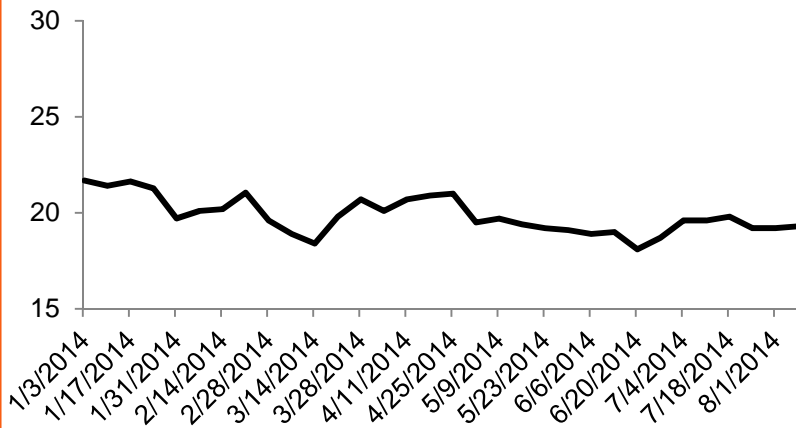
North Region AAR Dwell



AAR Dwell

Baseline 2/1-2/7	Actuals QTD 8/8	Change from Baseline
39.8	31.7	↓ 20.4%

North Region AAR Train Speed

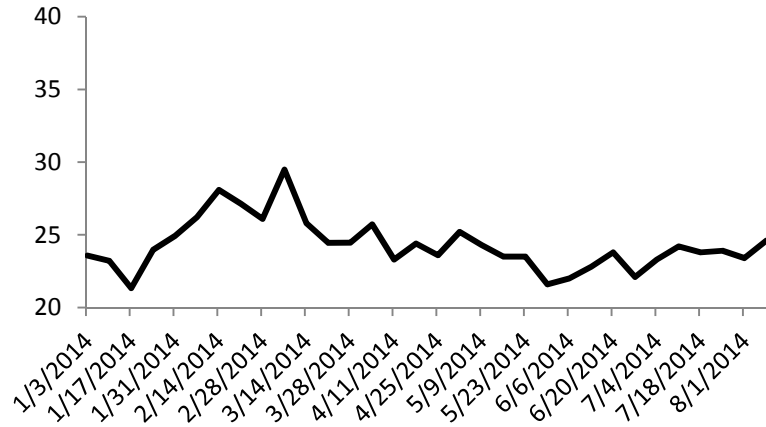


AAR Train Speed

Baseline 2/1-2/7	Actuals QTD 8/8	Change from Baseline
20.1	19.4	↓ 3.5%

Central Region

Central Region AAR Dwell



AAR Dwell

**Baseline
2/1-2/7**

26.2

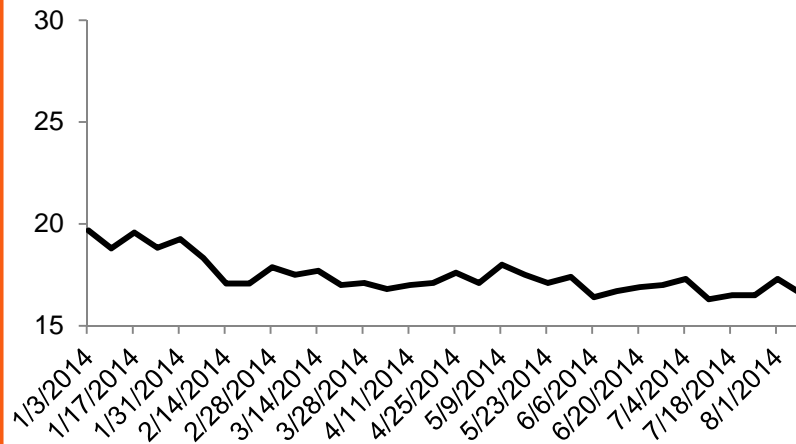
**Actuals
QTD 8/8**

23.9

**Change
from Baseline**

↓ 8.8%

Central Region AAR Train Speed



AAR Train Speed

**Baseline
2/1-2/7**

18.3

**Actuals
QTD 8/8**

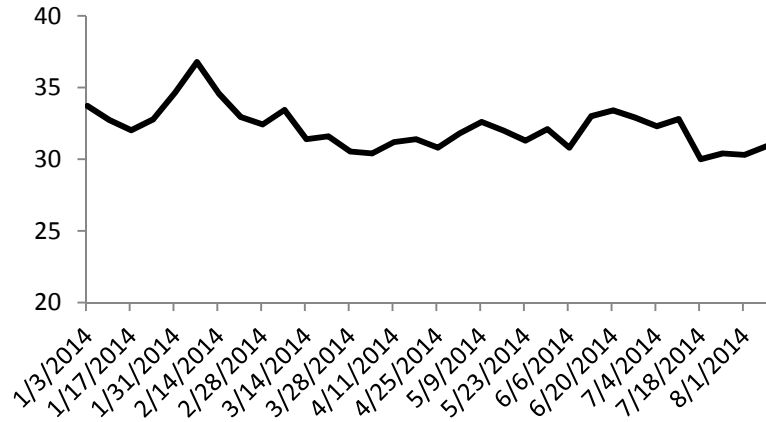
16.7

**Change
from Baseline**

↓ 8.7%

South Region

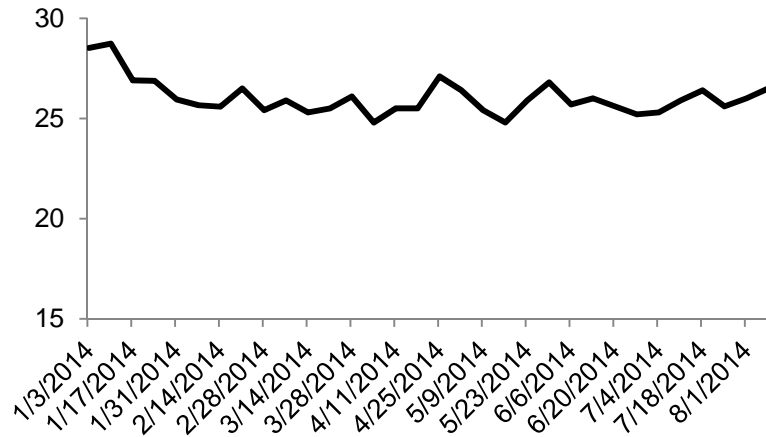
South Region AAR Dwell



AAR Dwell

Baseline 2/1-2/7	Actuals QTD 8/8	Change from Baseline
36.8	31.0	↓ 15.8%

South Region AAR Train Speed



AAR Train Speed

Baseline 2/1-2/7	Actuals QTD 8/8	Change from Baseline
25.7	26.0	↑ 1.2%

BNSF Long-Term Actions to Add Capacity

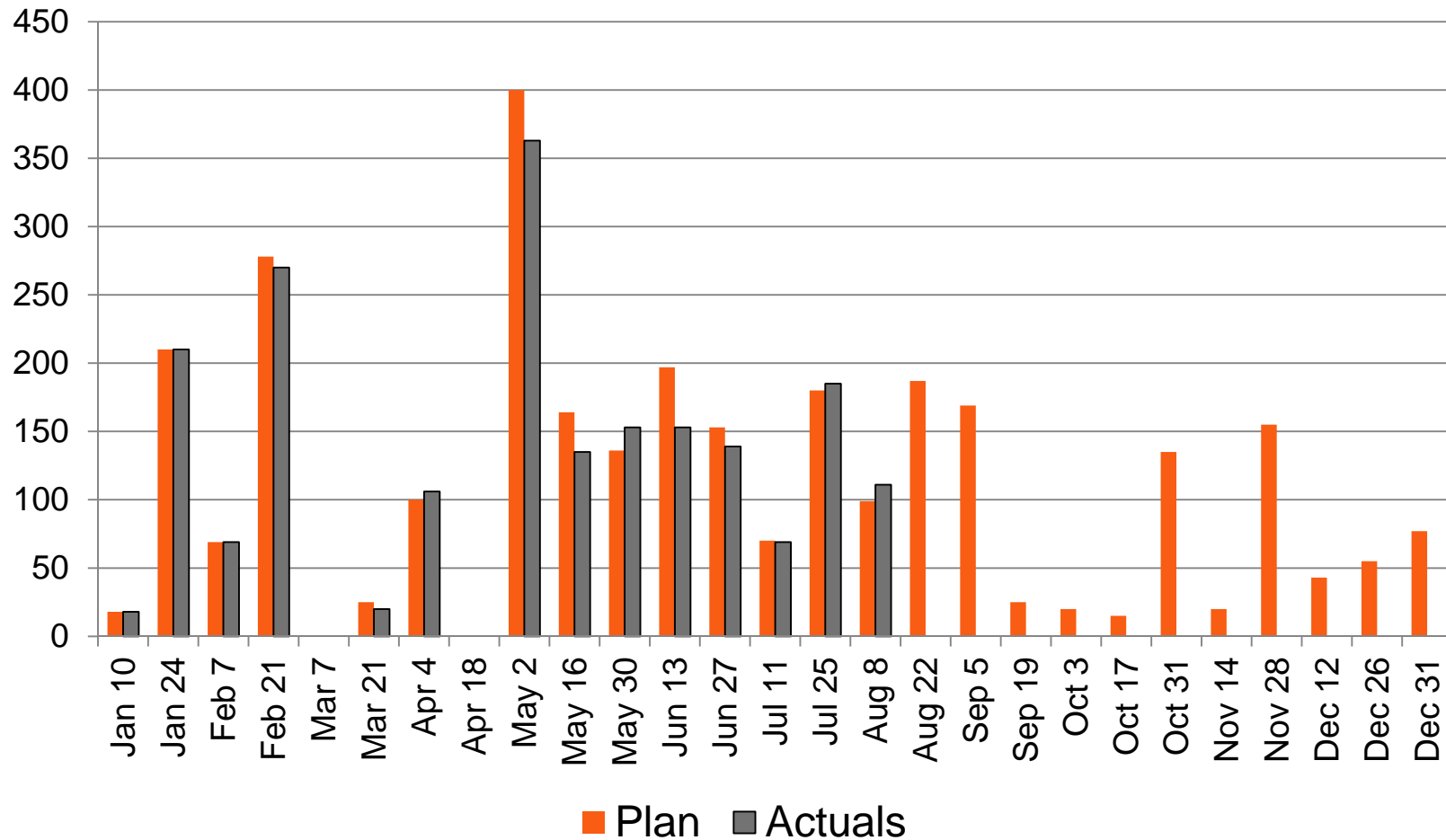
\$ Millions

	Annual Goal	YTD Q3 Goal	Prior Period (YTD 7/25)	Current Period (YTD 8/8)
People Hiring				
TY&E	3,000	2,500	1,890	2,001
Eng & Mech	2,000	1,950	2,053	2,210
Locomotive Acquisitions	500	389	274	289
Car – Acquisitions, Replacements & Extensions	5,000	1,995	2,112	2,113
Expansion Capital	\$ 900	\$ 600	\$ 326*	\$ 419*
Replacement & Maint Capital	\$ 2,300	\$ 1,730	\$ 1,119*	\$ 1,351*

* YTD 7/25 represents YTD through June 2014. YTD 8/8 represents YTD through July 2014.



System TYE Employees Hired & Trained

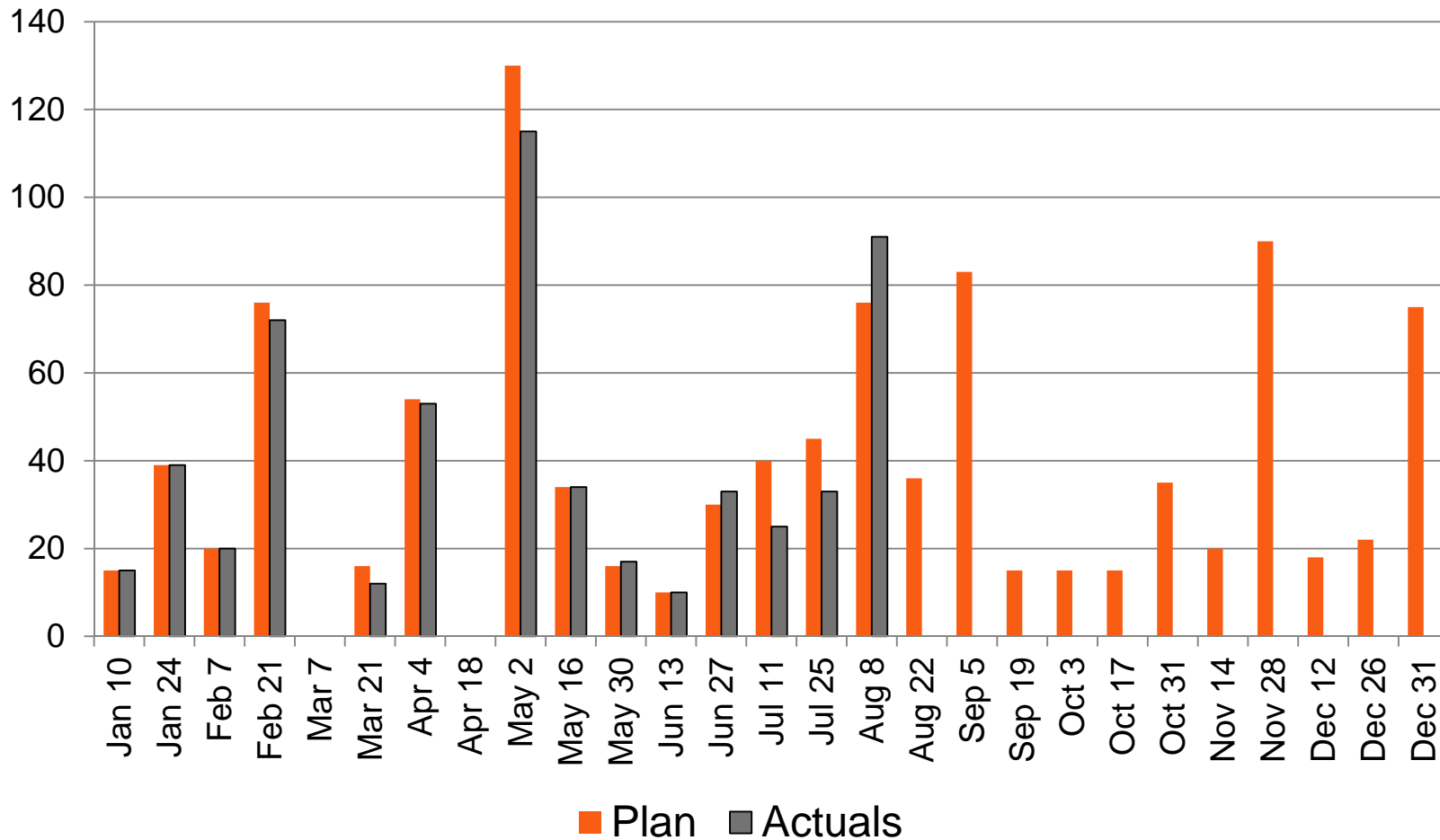


Cumulative	Jan	Feb	Mar	Apr	May	Jun	Jul	Aug*	Sep	Oct	Nov	Dec
Plan	297	575	650	1,100	1,400	1,750	2,000	2,450	2,500	2,650	2,825	3,000
Actual	297	567	692	1,055	1,344	1,695	1,911	2,001				

* Actual is YTD through 8/8/14, plan is YTD through 8/31/14.



North TYE Employees Hired & Trained



Cumulative	Jan	Feb	Mar	Apr	May	Jun	Jul	Aug*	Sep	Oct	Nov	Dec
Plan	74	150	220	350	400	470	525	720	750	800	910	1,025
Actual	74	146	211	325	377	435	479	569				

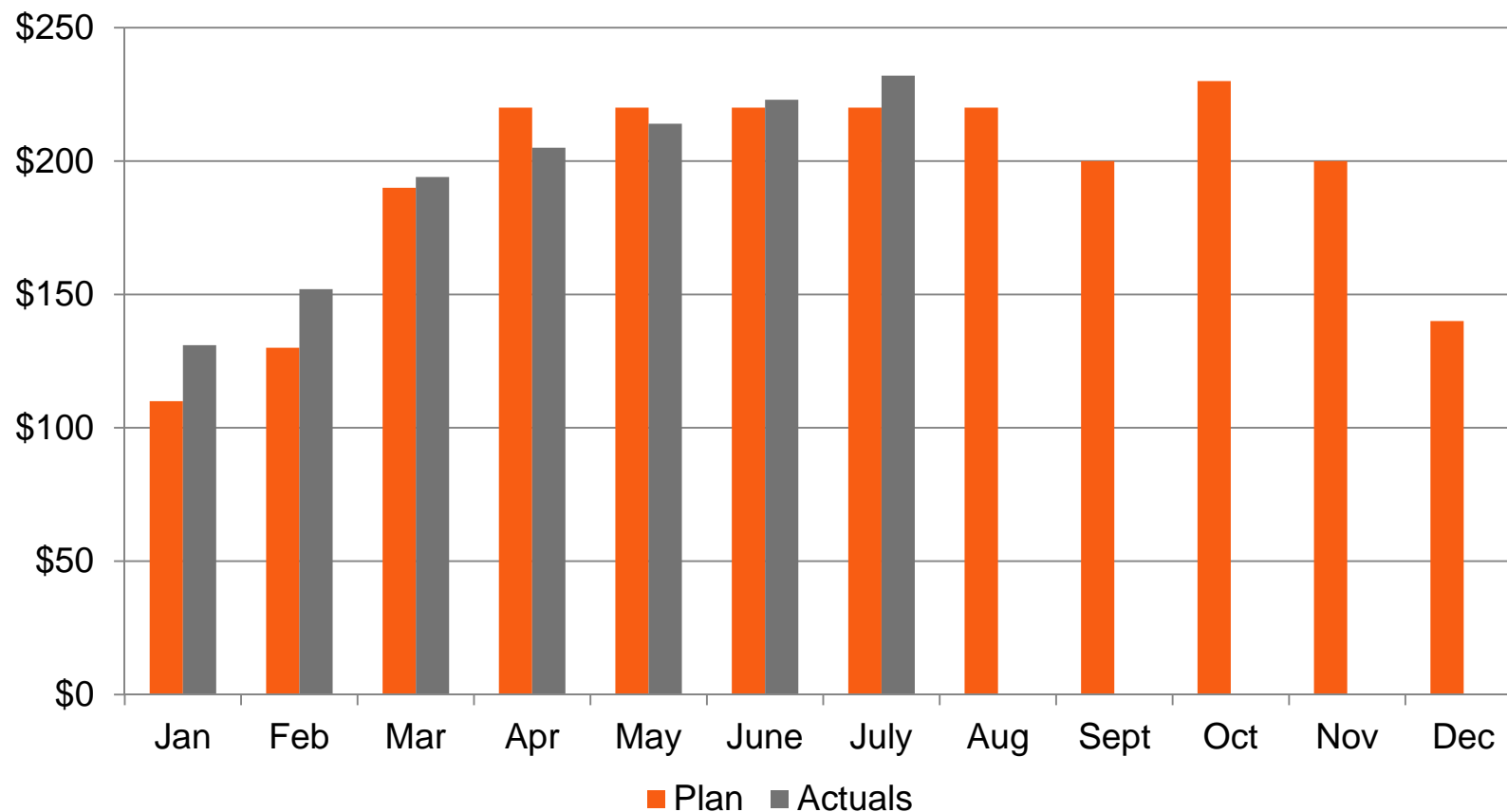
* Actual is YTD through 8/8/14, plan is YTD through 8/31/14.



System Capacity and Reliability

\$ Millions

Replacement & Maintenance Capital



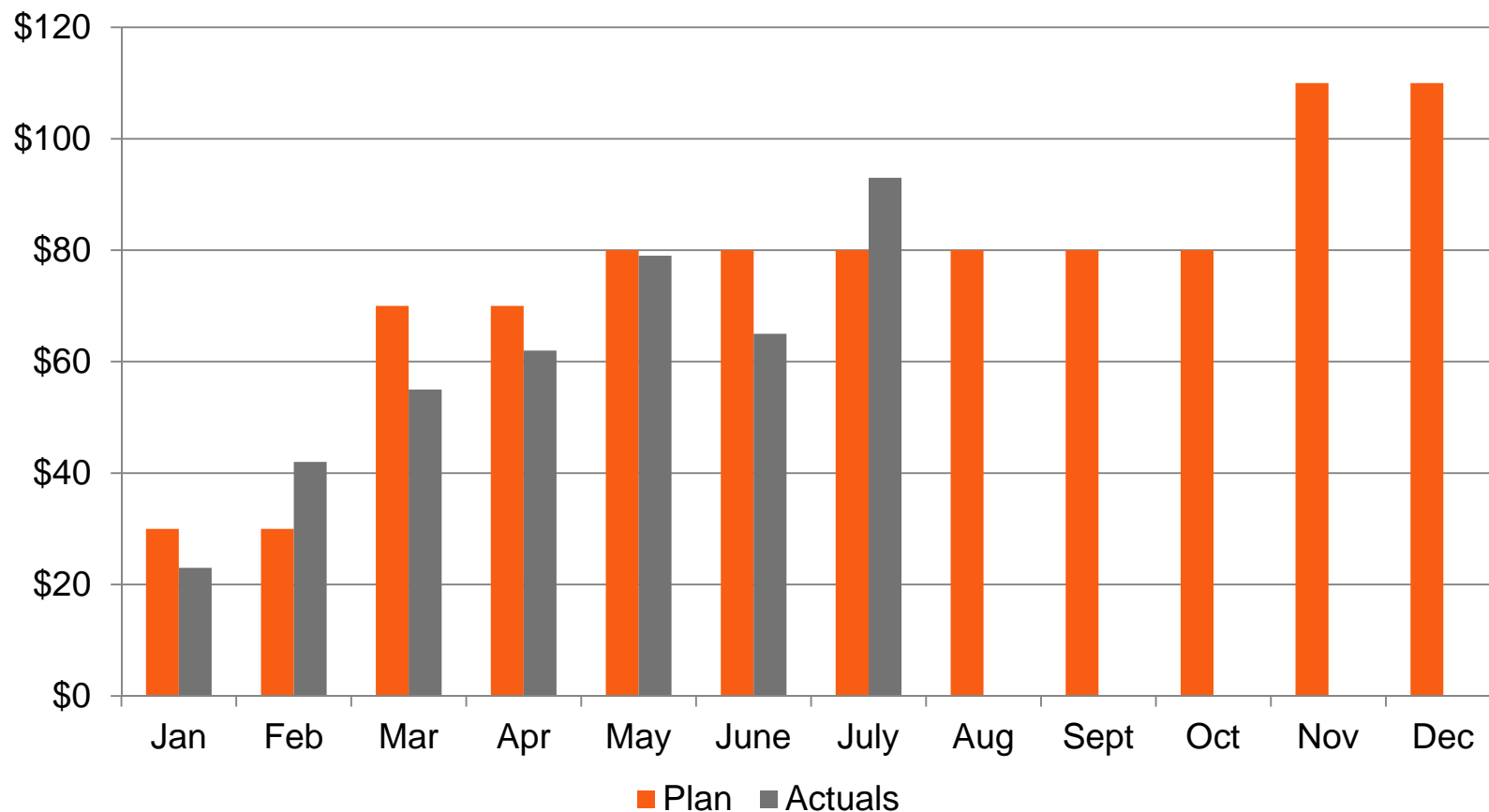
Cumulative	Jan	Feb	Mar	Apr	May	Jun	Jul	Aug	Sep	Oct	Nov	Dec
Plan	\$110	\$240	\$430	\$650	\$870	\$1,090	\$1,310	\$1,530	\$1,730	\$1,960	\$2,160	\$2,300
Actual	\$131	\$283	\$477	\$682	\$896	\$1,119	\$1,351					



System Capacity and Reliability

\$ Millions

Expansion & Efficiency Capital



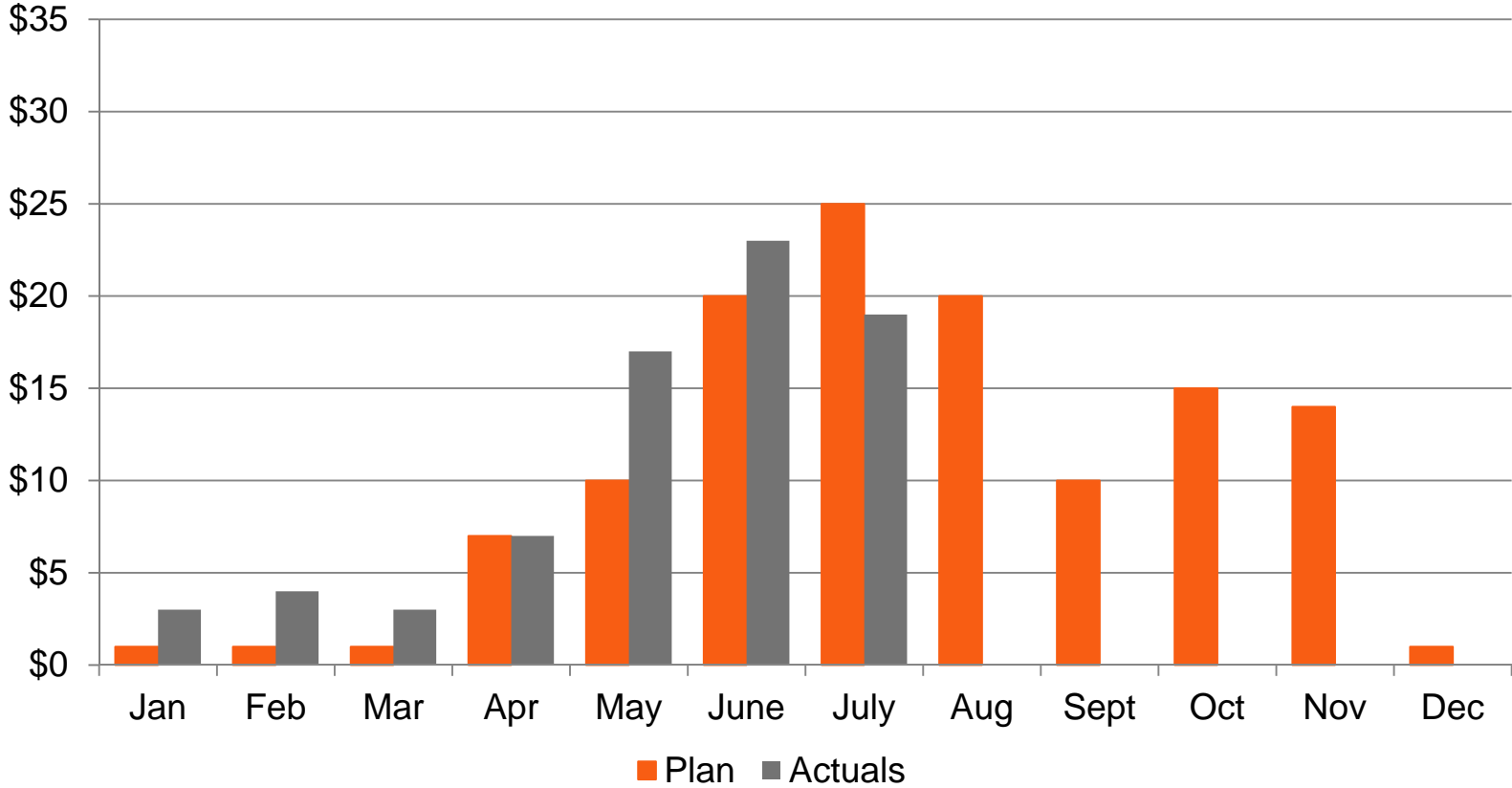
Cumulative	Jan	Feb	Mar	Apr	May	Jun	Jul	Aug	Sep	Oct	Nov	Dec
Plan	\$30	\$60	\$130	\$200	\$280	\$360	\$440	\$520	\$600	\$680	\$790	\$900
Actual	\$23	\$65	\$120	\$182	\$261	\$326	\$419					



North Dakota Capacity and Reliability

\$ Millions

Replacement & Maintenance Capital



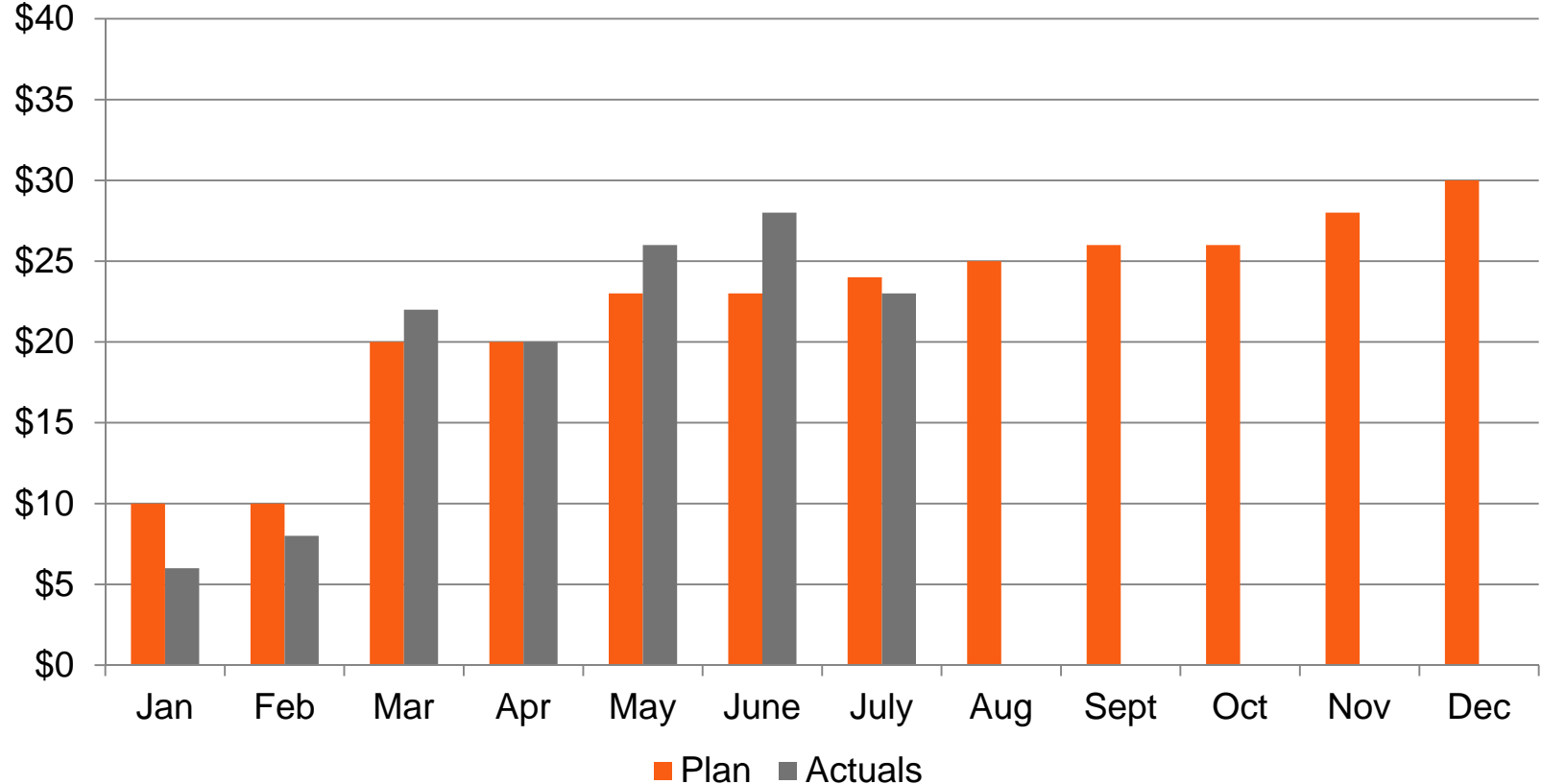
	Jan	Feb	Mar	Apr	May	Jun	Jul	Aug	Sep	Oct	Nov	Dec
Cumulative Plan	\$1	\$2	\$3	\$10	\$20	\$40	\$65	\$85	\$95	\$110	\$124	\$125
Actual	\$3	\$7	\$10	\$17	\$34	\$57	\$76					



North Dakota Capacity and Reliability

\$ Millions

Expansion & Efficiency Capital



	Jan	Feb	Mar	Apr	May	Jun	Jul	Aug	Sep	Oct	Nov	Dec
Cumulative Plan	\$10	\$20	\$40	\$60	\$83	\$106	\$130	\$155	\$181	\$207	\$235	\$265
Actual	\$6	\$14	\$36	\$56	\$82	\$110	\$133					

